

STRUCTURAL SITE INSTRUCTION S-SI# 004

Project Name: Echo Beach (7531 Cove Beach Road)	Project No.: 1633
To: Robin Surcess <robin@westcoastturnkey.com>	Date: 2022 10 06
CC: Eric Pettit <Eric@openspacearchitecture.com>, Erik <Erik@openspacearchitecture.com>	Sheet: 1/2
Subject / Ref. Document: RFI-18 (Masonry Siding Details)	

Incorporate the following structural site instruction(s)

Refer to the following drawings for the above mentioned revisions:
- SSK-005

These drawings form part of the contract documents and are to be read in conjunction with all previously issued documents.

---- END OF SITE INSTRUCTION #004 ----

Signature: _____

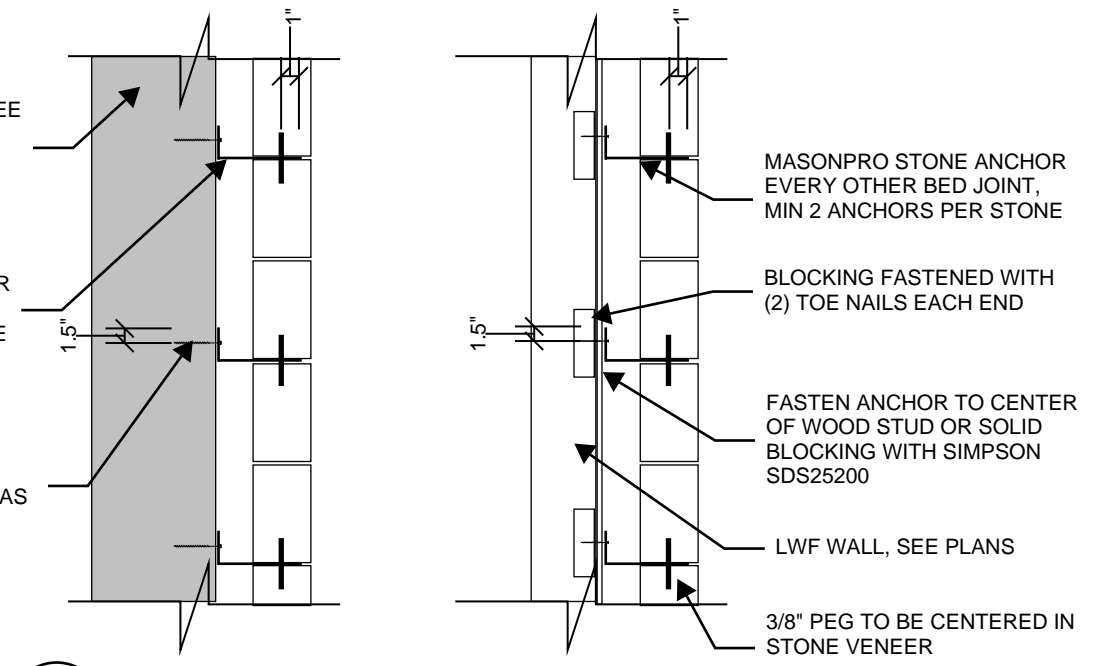
This S-SI is issued as a written clarification of the intention of the Contract Documents and/or instructions to bring the works into conformity with the Plans and Specifications at no extra cost to the owner. The above notes/instructions shall not be construed as a complete list nor shall it relieve the Contractor from the responsibility to properly perform their work/duties in accordance with the Contract Documents.

This document is not an authorization to perform additional work.

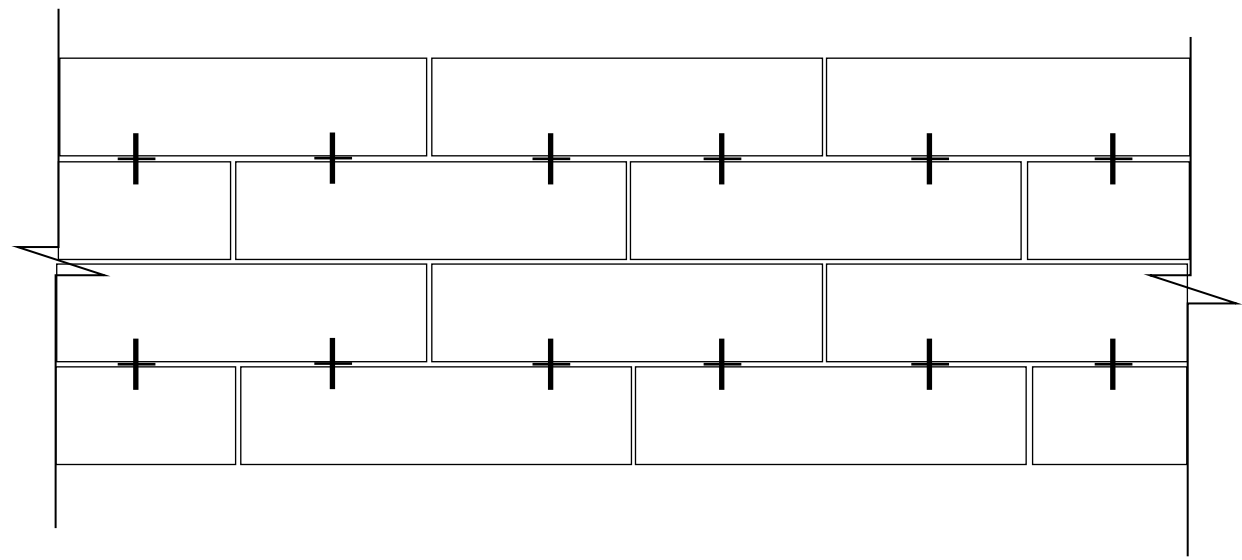
MIN. 8" CONCRETE WALL, SEE PLANS FOR SIZE/REINFORCEMENT

MASONPRO STONE ANCHOR EVERY OTHER BED JOINT, MIN 2 ANCHORS PER STONE

FASTON ANCHOR TO CONCRETE WITH MIN. 3" LONG 1/4" DIAMETER CONCRETE SCREW SUCH AS HILTI KWIC CON II+ OR EQUIVALENT

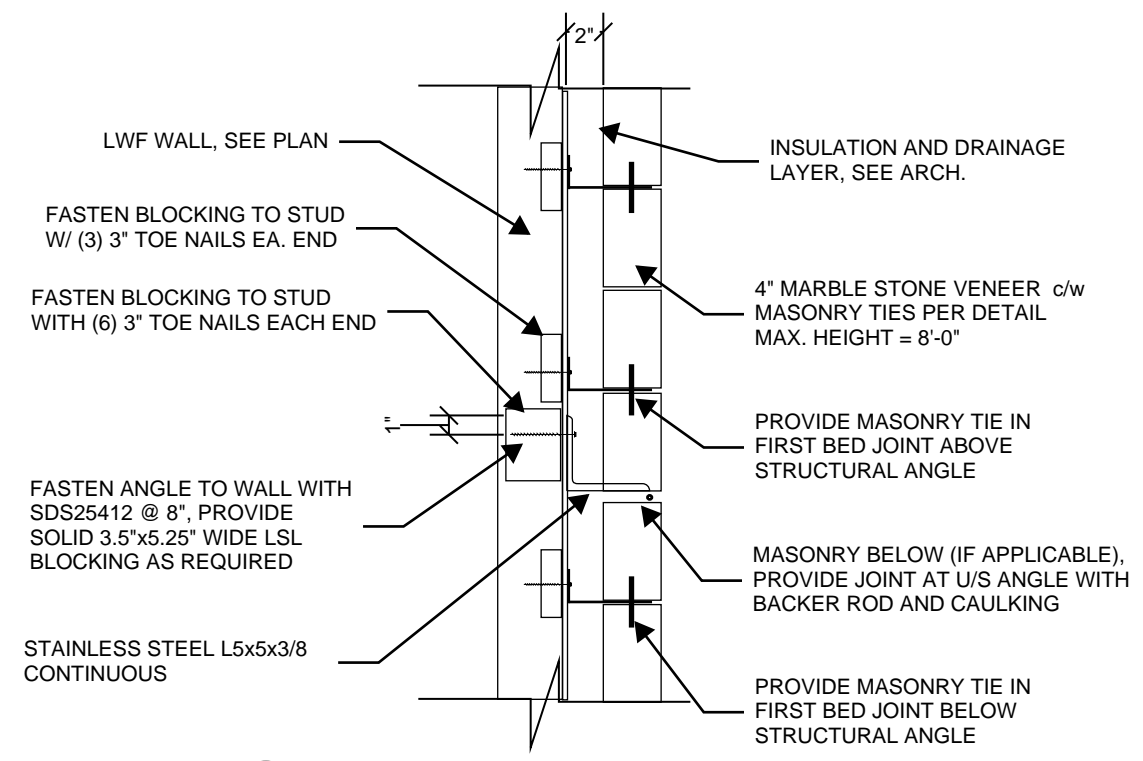


SAMPLE CLADDING TIE SECTION
Scale: N.T.S.

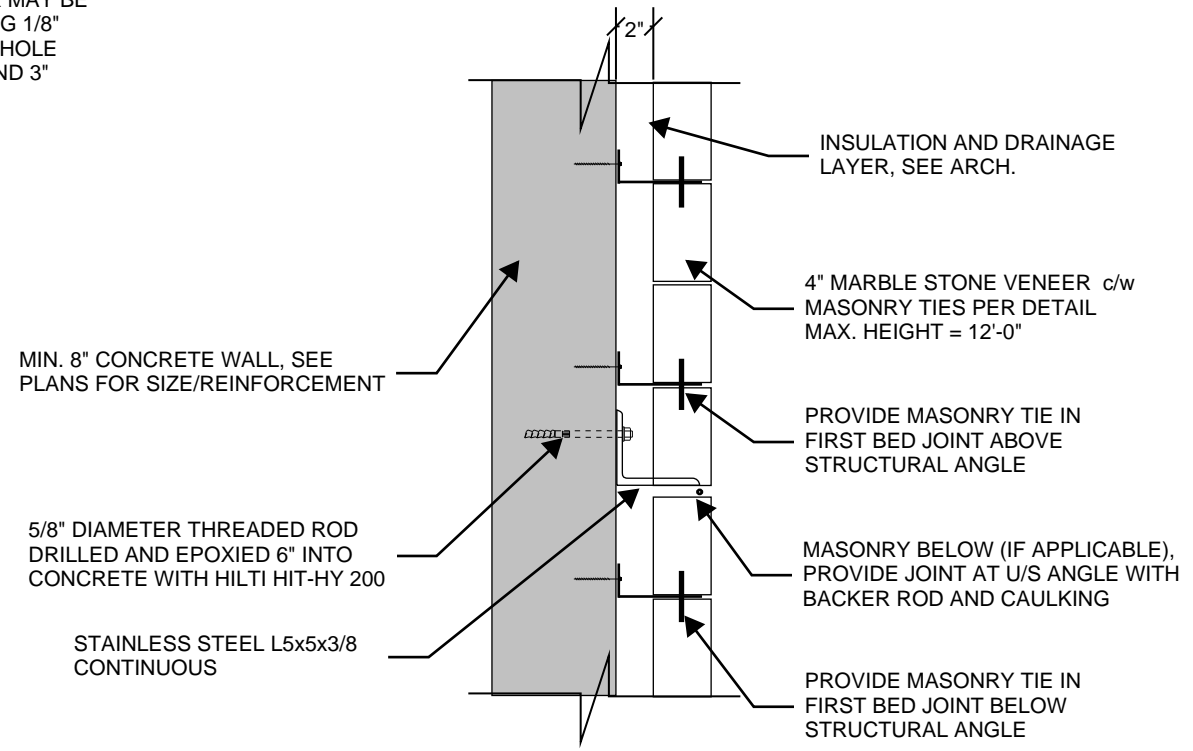


SAMPLE CLADDING TIE ELEVATION
Scale: N.T.S.

NOTE:
MASONPRO STONE ANCHOR MAY BE SUBSTITUED WITH 1.25" LONG 1/8" THICK 3"x5" BENT PLATE c/w HOLE 1/4" DIAMETER FASTENER AND 3" LONG 3/8" DIAMETER PEG



CONNECTION TO LWF WALL
Scale: N.T.S.



CONNECTION TO CONCRETE
Scale: N.T.S.